

PÁLAVSKÁ REGATTA 2013 - 120 Sailing years in Bohemia

ISAF World Sailing Ranking List Event: GR 50 – Laser S+R, Finn

Czech Sailing Cup for all classes.

3 - 5 May 2013, Nové Mlýny lake – Pavlov, Czech republic, YC Dyje Břeclav

SAILING INSTRUCTIONS

1. RULES

- 1.1 The regatta will be governed by the rules as defined in the Racing Rules of Sailing 2013-2016 (RRS).
- 1.2 When there is any disagreement on the interpretation of the rules defined by pt.1.1 of these SI, then the English Edition shall prevail.
- 1.3 The 720° turn penalty (RRS, No. 44.1) shall be applied.
- 1.4 Judging on the water: The Appendix P (RRS) shall apply. An action or non-action of the protest committee (PC) according to this instruction shall not be a subject of an ask for redress. This changes the rule 62.1(a). The boat, which accepts the penalty, cannot be protested by another boat for violating this rule.

2. CLASSES

Regatta is organised for D-one, Finn, Laser Standard, Laser Radial and Europe classes. For all classes as regatta of the Czech cup. The regatta is included in ISAF World Sailing Ranking List 50 for Laser Standard, Laser Radial and Finn classes.

3. ENTRIES

All participants have to register to the race in compliance with the Notice of race. (No.8)

4. NOTICES, CHANGES AND AMENDMENTS

- 4.1 Race committee (RC) notice board and Protest committee notice board will be placed near the Race Committee office.
- 4.2 Any changes and amendments to the SI will be posted on the notice board at least 1 hour before they come in force. All changes concerning the start-time of the first race of the following day have to be posted by 9.00 P.M. the previous day.

5. SCHEDULE OF RACES

Friday, 3 May 2013

8.00 – 9.30 A.M. Registration of the competitors

10.00 A.M. Opening ceremony, briefing of the competitors

12.00 A.M. Start of the first race. The schedule of the following races will be announced by the Race Committee.

Saturday, 4 May 2013

10.00 A.M. Start of the first race of day. The schedule of the following races will be announced by the RC.

Sunday, 5 May 2013

10.00 A.M. Start of the first race of day. The schedule of the following races will be announced by the RC.

No start will be made after 3.00 P.M.

Prize giving and closing ceremony.

6. SIGNALS MADE ASHORE

- 6.1 For signals made ashore will be used the big post in the Yacht Club.
- 6.2 Displaying "L" flag together with one sound signal means that the Notice for competitors was posted.
- 6.3 "AP" Answering Pennant – Postponement Signal
- 6.3.1 Displaying AP flag together with two sound signals means that the race is postponed.
- 6.3.2 Lowering the "AP" flag together with one sound signal means that the race will not start in less than 30 minutes.
- 6.4 "Y" Code Flag. When the "Y" flag is displayed, all the competitors are required to wear the life jackets during the race.
- 6.5 "B" Code Flag. Displaying the "B" flag together with one sound signal represents the start of the protest time. Lowering the "B" flag together with one sound signal represents the end of the protest time.

7. SIGNALS MADE ON WATER

- 7.1 "L" Code Flag. The display of both the "L" flag and the blue finish flag means the following:

The next race starts as soon as possible after the current race will be finished.

No race will be shortened.

7.2 Class flags will be:

Class	Flag
D-one	class flag
Finn	"F"
Laser	class flag
Laser Radial	„W “
Europe	"E"

7.3 For Finn and Europa classes will be used changes to rule 42 according their class rules, as follows:

7.3.1 Flag "Q" displayed at the start or near a mark indicates that: "After starting or rounding the nearby mark, rule 42 is varied in that, except on a beat to windward, pumping, rocking and ooching are permitted."

7.3.2 Flag "R" displayed near a mark indicates that: "After rounding the nearby mark, rule 42 applies without any changes."

7.3.3 This rule will be used if the wind speed will be 12 knots (6 m/s) or more – measured at deck level.

8 COURSE AND MARKS

8.1 Inflatable rubber cylinders shall be used as race course marks. The diagrams in Appendix I of these (SI) show the courses. Numerical identification on the inflatable rubber cylinders is irrelevant.

8.2 Marks and the definition of the starting line: The starting line is between the starting vessel with an orange flag and the white buoy with a yellow flag.

8.3 The finishing line is between the finishing vessel with an orange flag and the white buoy with a blue flag.

8.4 A boat shall not enter the racing area before her warning signal. The racing area is defined by a distance of 50m in all directions from the starting line.

8.5 After finishing, the boat shall not float backward across the finishing line.

8.6 After the starting signal, the racing area is the area within an imaginary line drawn 50 metres outside any point where a boat might sail during normal racing.

9. SHORTEN COURSE

10. START

10.1 The races will be started in accordance with the rule No.26

10.2 A boat starting later than 4 minutes after the starting signal will be scored DNS.

10.3 The starting signal of the preceding class can be also the warning signal for the race of the class to follow.

11. RECALLS

The signalling for the start being cancelled will be signalled in accordance with the rule No.29.

12. TIME LIMIT

The RC will apply the 20-minute time limit after finishing of the first boat of the class. The boat that does not finish the race within the 20-minute period will be scored as DNF. The opening of the finishing line shall be signalled on the (RC) finishing vessel by displaying the class flag (see instruction 7.2) and one sound signal. Lowering class flag with no sound shall signal closure of the finishing line for their class.

13. PROTESTS, ASKS FOR REDRESS AND COMPULSORY REPORTS

13.1 The protests or asks for redress shall be written on forms available at the race office and should be delivered to RC during the protest time.

13.2 The beginning and the end of the protest time will be signalled in accordance with the 6.5 instruction of these SI.

13.3. For all classes, the protest time limit is 60 minutes. The same protest time limit applies to all protests by the RC and PC and request for redress. This changes rules 61.3 and 62.2.

13.4 The boats, which either have not finished the race or have retired the race, have to fill in the appropriate form by the end of the protest time.

13.5 The boats, which broke one of the rule (part two) and accepted the 720° turn penalty, have to record the penalty completion by the end of the protest time.

13.6 A list of boats that, under instruction 1.4 have acknowledged breaking rule 42 or have been disqualified by the protest committee will be posted before the protest time limit.

13.7 The protest schedule will be posted on the PC notice board within the 20 minutes

period after the end of the protest time. Each competitor is required to read all the protest notices within the 30-minutes period after the end of the protest time. Hearings will be held in PC Office.

- 13.8 On the last day of the regatta a request for reopening a hearing shall be delivered:
- 13.8.1within the protest time limit if the party requesting reopening was informed of the decision on the previous day;
- 13.8.2no later than 20 minutes after the party requesting reopening was informed of the decision on that day. This changed rule 66.

14. NUMBER OF RACES, VALIDITY OF REGATTA

- 14.1 There will be max. 9 races for all classes.
- 14.2 For validity of this regatta must be at least one valid race.
- 14.3 However, all classes have to complete at least 3 races in order to meet the legal requirements of the Czech Cup.
- 14.4 For validity ISAF Grade 50 have to complete at least four races.

15. SCORING

- 15.1 There will be used a "low points" scoring system which is in accordance with the A Appendix of the RRS.
- 15.2.1 When fewer than 4 races have been completed, a boat's series score will be the total of her race scores.
- 15.2.2 When from 4 to 8 races have been completed, a boat's series score will be the total of her race scores excluding her worst score.
- 15.2.3 When 9 races have been completed, a boat's series score will be the total of her race scores excluding her two worst scores.

16. PRIZES

Prizes will be awarded in accordance with Notice of race (No.9).

17. RADIO – COMMUNICATION, MOTOR BOATS

- 17.1 Support motor boats for this race are allowed, but must be registered. To register must meet the following conditions:
- 17.1.1 Using the motor boat is not in conflict with the law of Nove Mlýny lake.
- 17.1.2. The crew is authorized to maintain motor boat.
- 17.2 In the case of non-compliance rules set out below is a protest or race committee shall be entitled to withdraw motor boat registration:
- 17.2.1 The coach boats shall not be located:

- a) closer than 50 m from any racing boats;
- b) in the 50 m zone starting line and tags since the preparatory signal until all boats leave the starting zone, or until the race committee signals a postponement, general recall or abandonment;
- c) between any racing boats and other brand track;
- d) between the inner and outer trapezoid course when boats are racing on both courses;
- e) closer than 50 meters from each mark track, while boats are close to the mark;
- f) in the 50 m zone of the finish line and brand while completing ship.

- 17.2.2 Coach boats should continue to move around the racing surface so as to minimize the effect of motion on racing boats. Motor boats with a speed of 5 knots must be at least 150 m from any racing boats.

- 17.2.3 Between race or when all the races for the racing day postponed or suspended, coach boats may enter the competition area to serve their charges, but limit their speed to 5 knots

- 17.3 If the race committee boat pennant erected No.0 without audio, support boats may enter the competition area in order to save. After starting the pennant No. 0 no sound signal is input support boats to race again prohibited area.

- 17.4 During the race, the crew of the racing boat must not perform any radio communication. Infringements will be sanctioned with disqualification of the boat from regatta or series. This restriction also applies to mobile telephones.

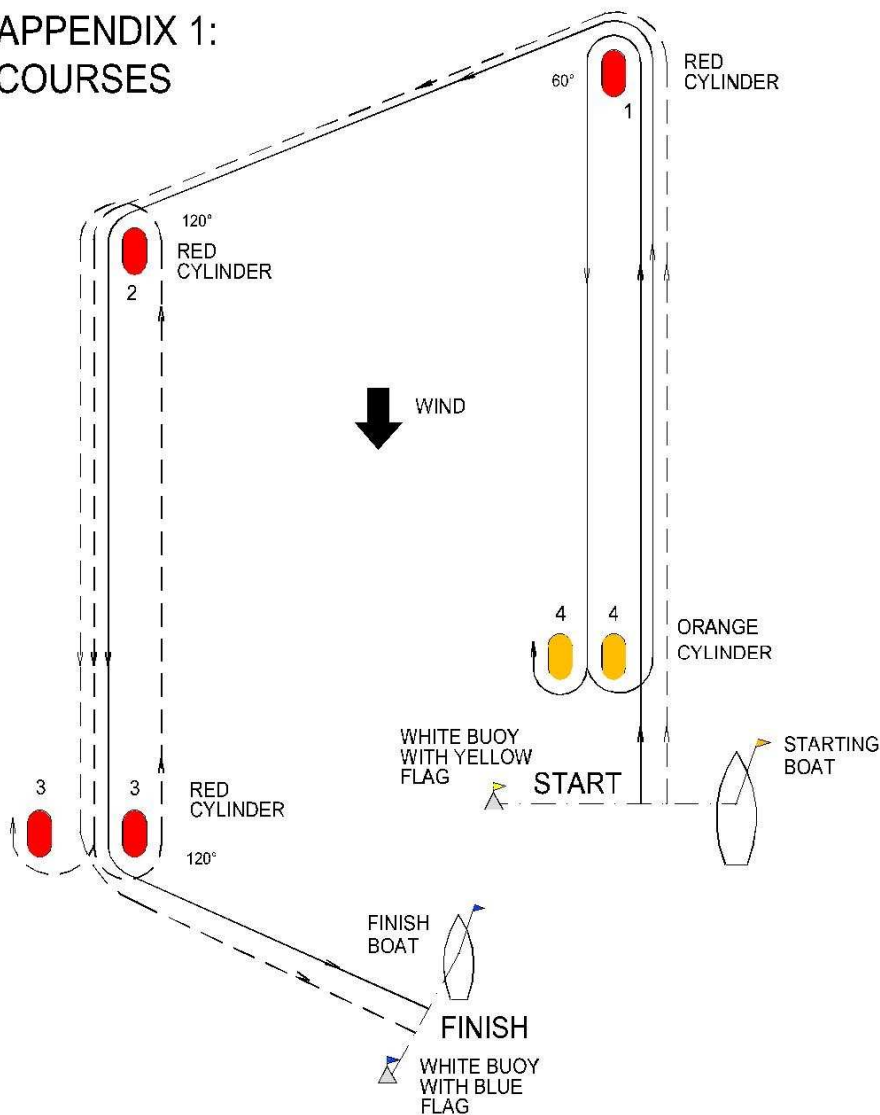
18. SAFETY REGULATIONS

In Addition to rule 1.2 applies: competitor up to 18 years of age shall wear their personal buoyancy equipment while afloat.

19. LIABILITY

The organisers of this Regatta do not accept any liability for loss, material damage and personal injury caused by, or in connection with this event. All competitors will start at their own expenses, risk and dang.

APPENDIX 1: COURSES



WHEN THE CODE FLAG 1 IS DISPLAYED TOGETHER WITH WARNING SIGNAL - STARTING CLASS WILL SAIL OUTER LOOP
 WHEN THE CODE FLAG 2 IS DISPLAYED TOGETHER WITH WARNING SIGNAL - STARTING CLASS WILL SAIL INNER LOOP

OUTER LOOP



START-1-2-3-2-3-FINISH



INNER LOOP



START-1-4-1-2-3-FINISH

